

RE-SPUN



0032



0003



0002



0026



0004



0023



0081



0056



0029



0017



0025



0063



0079



0043



0031



0078



0059



0064



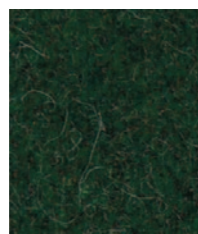
0042



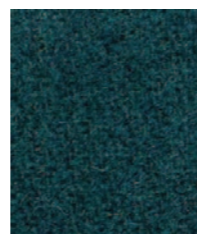
0045



0027



0061



0073

inloom



0084



0083



0070



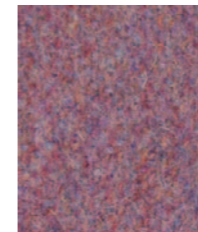
0074



0053



0062



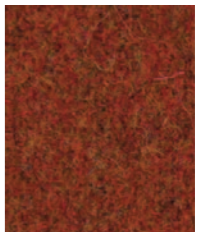
0040



0012



0019



0058



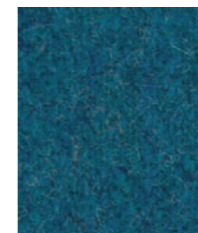
0076



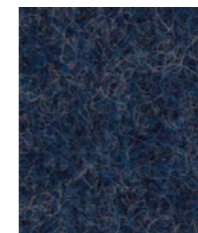
0071



0030



0018



0014



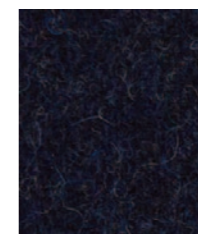
0077



0016



0075



0048



#### Composition

70% Recycled Wool  
20% PL – 5% PA – 5% PC

#### Weight

530 ± 5% g/ml  
365 ± 5% g/m<sup>2</sup>

#### Width

145 ± 2% cm

#### Abrasion Resistance

UNI EN ISO 12947/2  
> 60,000 Martindale rubs

#### Light Fastness

UNI EN ISO 105-B02  
5 (blue scale)

#### Fastness To Rubbing

UNI EN ISO 105-X12  
Dry 4/5 Wet 4

#### Flammability

EN 1021- 1 & 2 (Cigarette & Match)  
BS 7176 Low Hazard  
The Furniture and Furnishing (Fire Safety) Regulations 1988 (UK domestic cigarette and match)  
BS 5852 Crib 5 (with FR treatment when specified)  
BS 7176 Medium Hazard (with FR treatment when specified)  
California Technical Bulletin 117  
UNI 9175 Class 1IM  
Flame retardant performance is dependent on the foam used

#### Colour

Slight colour difference between batch to batch has to be considered within commercial tolerance

#### Cleaning and washing

